

# Assess the City

dérive and détourne with children



Anne Thulson  
School of the Poetic City  
athulson@msudenver.edu

# School of the Poetic City



# School of the Poetic City



Gather  
Walk  
See  
Respond  
Collect  
Reflect

Gather

Walk

See

Respond

Collect

Reflect

Gather

Gather

Walk

See

Respond

Collect

Reflect



Gather  
Walk  
See  
Respond  
Collect  
Reflect

Walk

Gather

Walk

See

Respond

Collect

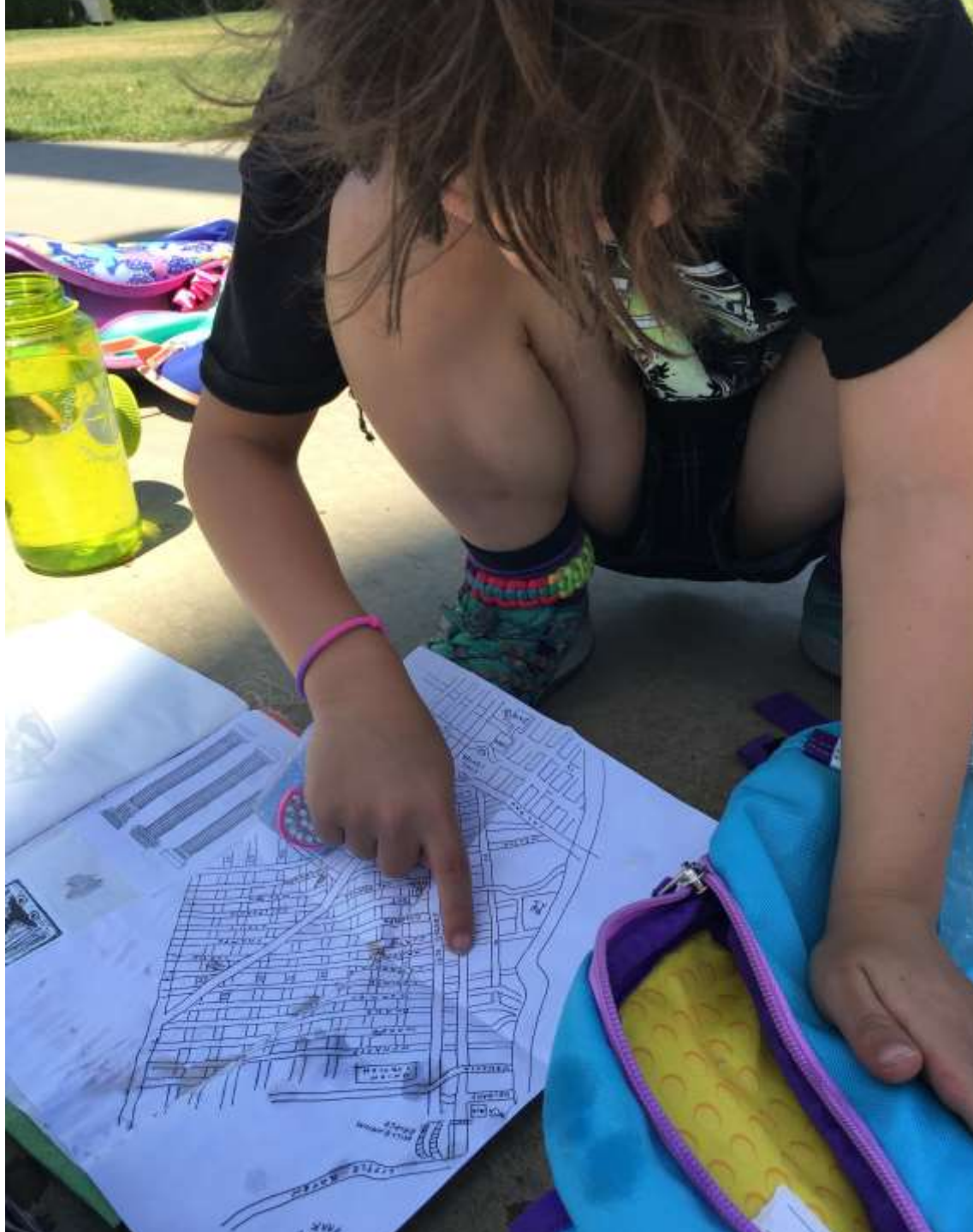
Reflect



Gather  
Walk

See  
Respond  
Collect  
Reflect





Gather  
Walk  
See  
Respond  
Collect  
Reflect



Gather  
Walk  
See  
Respond  
Collect  
Reflect



Gather  
Walk

See  
Respond  
Collect  
Reflect

See

Gather  
Walk

See

Respond  
Collect  
Reflect



Gather  
Walk

See

Respond

Collect

Reflect



Gather  
Walk

See

Respond

Collect

Reflect



Gather  
Walk

See

Respond

Collect

Reflect



Gather  
Walk

See

Respond

Collect

Reflect





Gather  
Walk

See

Respond

Collect

Reflect

Respond

Gather

Walk

See

Respond

Collect

Reflect



Gather  
Walk  
See  
Respond  
Collect  
Reflect



Gather  
Walk  
See  
Respond  
Collect  
Reflect



Gather

Walk

See

Respond

Collect

Reflect



Gather

Walk

See

Respond

Collect

Reflect



Gather  
Walk  
See  
Respond  
Collect  
Reflect



Gather  
Walk  
See  
Respond  
Collect  
Reflect

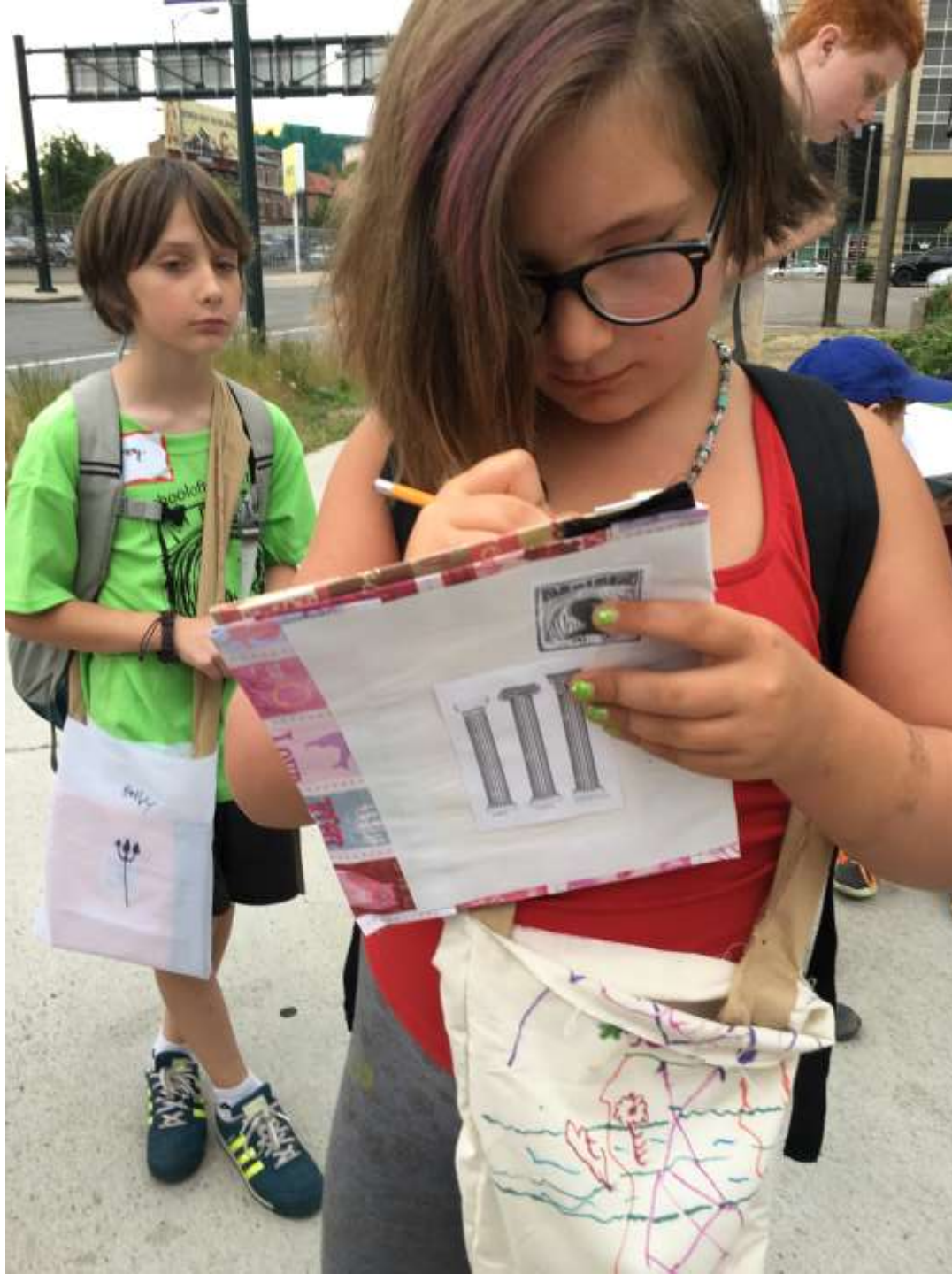




Gather  
Walk  
See  
Respond  
Collect  
Reflect

Collect

Gather  
Walk  
See  
Respond  
Collect  
Reflect



Gather  
Walk  
See  
Respond  
Collect  
Reflect



Gather  
Walk  
See  
Respond  
Collect  
Reflect



Gather  
Walk  
See  
Respond  
Collect  
Reflect

Reflect

Gather  
Walk  
See  
Respond  
Collect  
Reflect



Gather  
Walk  
See  
Respond  
Collect  
Reflect



Gather  
Walk  
See  
Respond  
Collect  
Reflect



# Assess the City

Respond

Gather

Walk

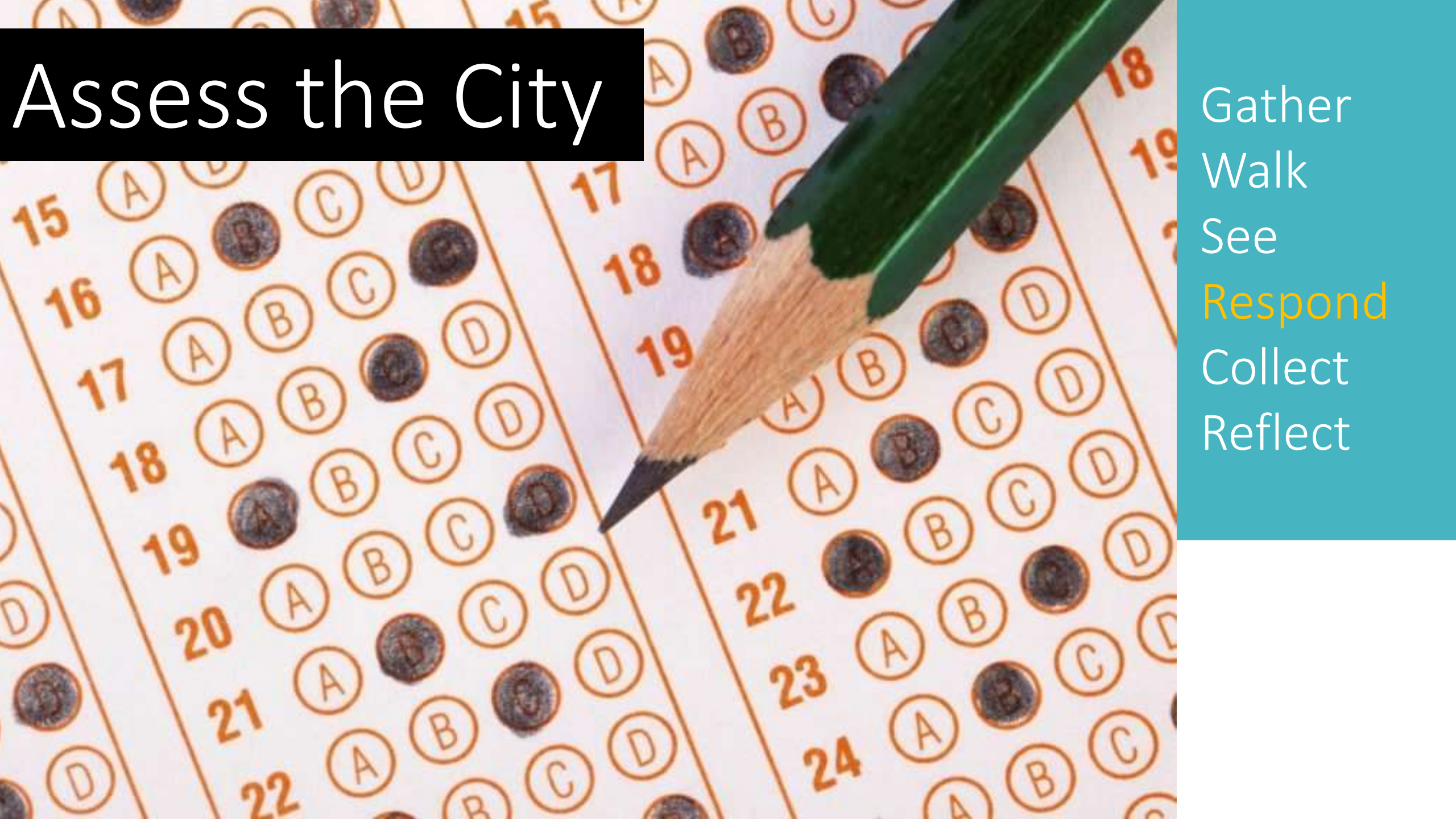
See

Respond

Collect

Reflect

# Assess the City



Gather  
Walk  
See  
Respond  
Collect  
Reflect

# Assess the City

What if you assessed the grown ups?

Gather  
Walk

See

Respond

Collect

Reflect

# Assess the City

What if you assessed the grown ups?

Make some blank awards

Gather  
Walk  
See  
Respond  
Collect  
Reflect

# Assess the City

What if you assessed the grown ups?

Make some blank awards  
Find things to assess.

Gather  
Walk  
See  
Respond  
Collect  
Reflect

# Assess the City

What if you assessed the grown ups?

Make some blank awards  
Find things to assess.  
Complete the assessment.

Gather  
Walk  
See  
Respond  
Collect  
Reflect

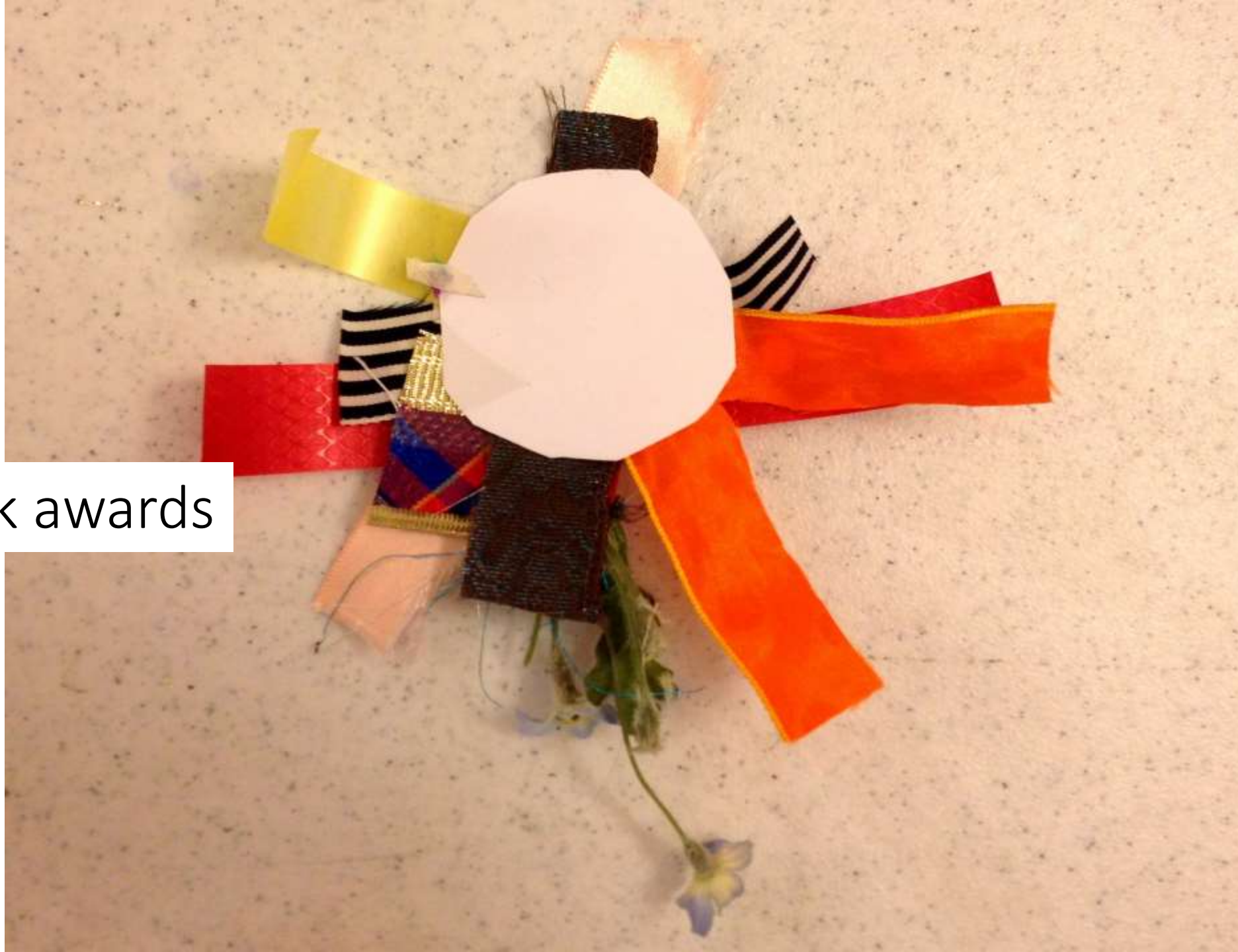
# Assess the City

What if you assessed the grown ups?

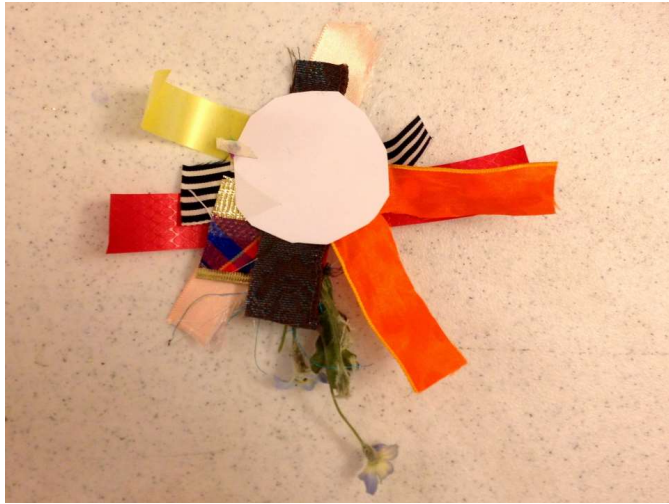
- Make some blank awards
- Find things to assess.
- Complete the assessment.
- Affix your assessment onto the site.

Gather  
Walk  
See  
Respond  
Collect  
Reflect

Make some blank awards



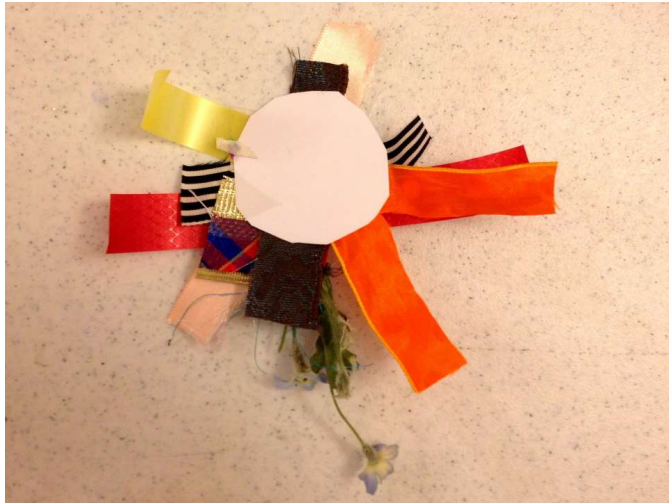




Make some blank awards.



Have a pencil and tape handy.



Make some blank awards



Have a pencil and tape handy.



# Number 1 Ram Statue



Most Columns



Most Columns



Blooper award goes to the stinkiest trash can.



Most Cool Rolling Hill



Coolest Bridge









Saddest Statue



Most Relaxing Lunch Spot



Most Stinky Water Fountain

prettyish  
thing

Prettyish Thing

A photograph showing a close-up of a blue, textured metal surface. A light blue sticky note is affixed to the surface, containing the handwritten text "not Bad". Below the sticky note, a white rectangular box contains the printed text "Not Bad". The background shows some dark, possibly black, structural elements and a brownish, textured surface in the lower-left corner.

not  
Bad

Not Bad

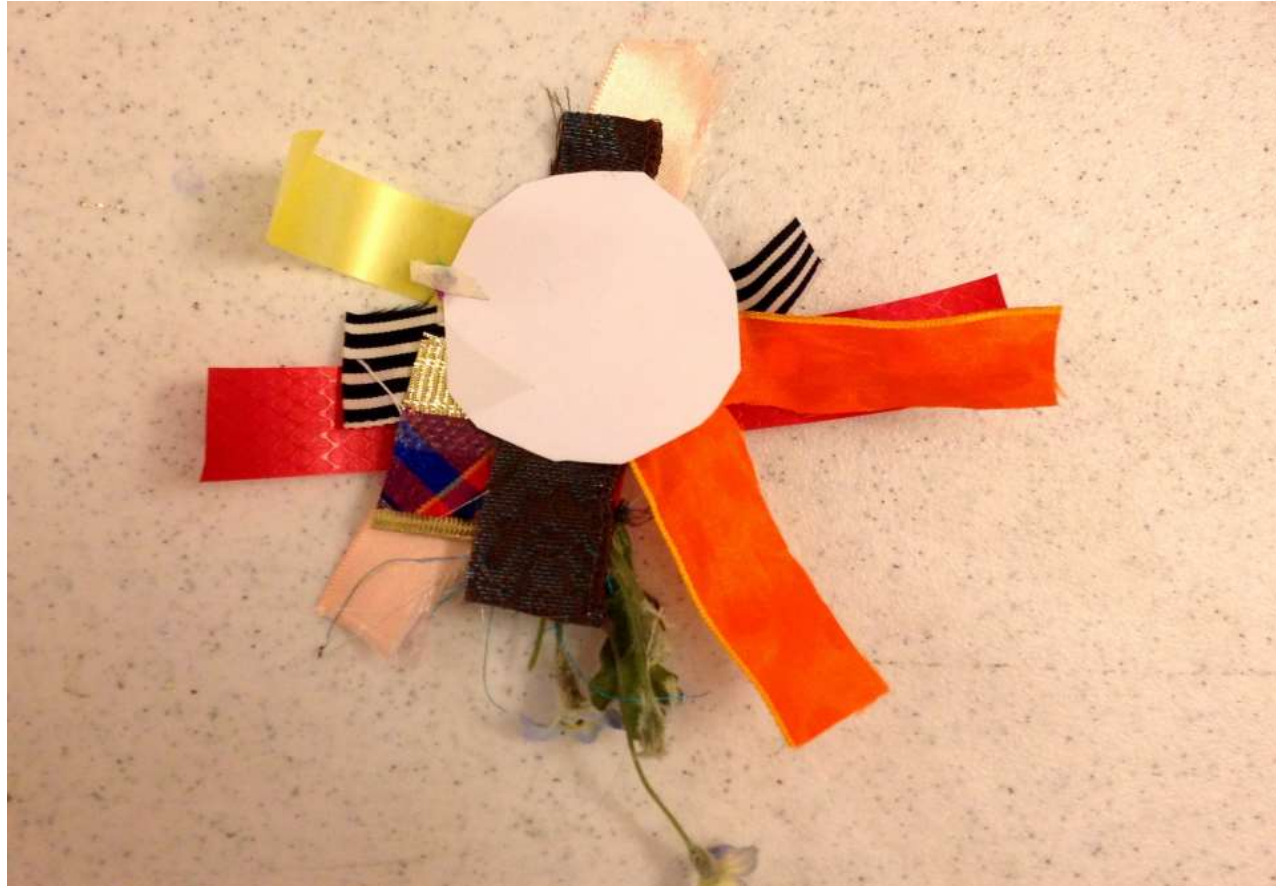
Place of Best Memories



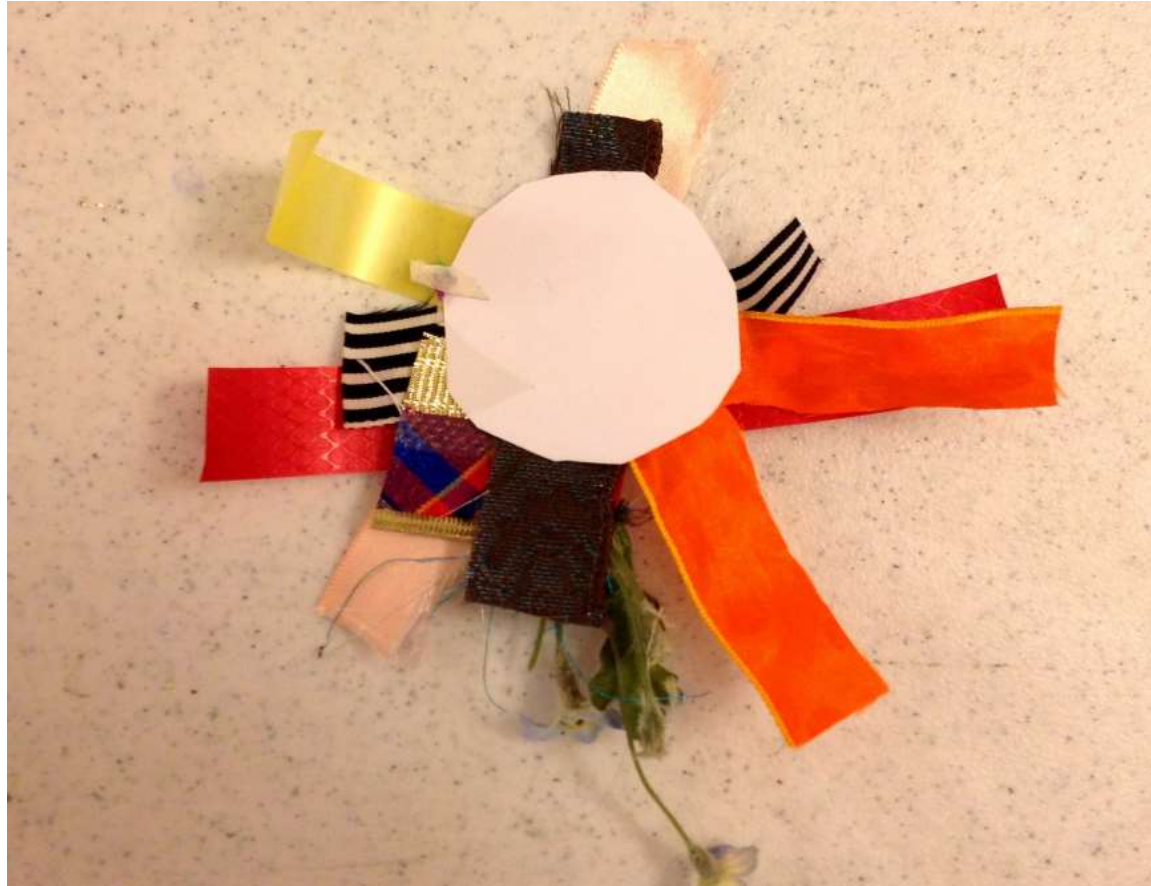




The first time it didn't work well.



Start with Blank Awards



Start with Blank Awards



Assess as You Walk



What is the nature of the search? You ask.

The search is what anyone would undertake if he were not sunk in the everydayness of his own life.

To become aware of the search is to be onto something.

Not to be onto something is to be in despair.

-Walker Percy, *The Moviegoer*